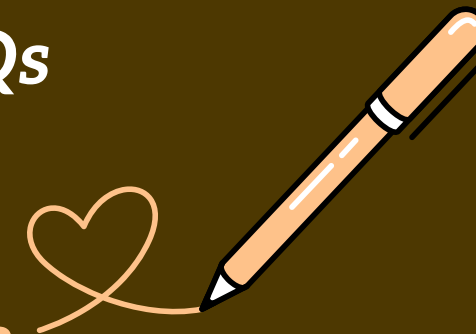




KSP RESIDENCY PROGRAM 2027

Definitions, Guidelines and FAQs

www.kspwriterscentre.com



KSP's annual literary, residency and fellowship programs are proudly sponsored by the KSP Foundation with generous support from the Shire of Mundaring.



DEFINITIONS & GUIDELINES

Literary Work

A piece of writing that demonstrates excellence in style, expression, and literary merit.

Literary Resume

Any relevant academic qualifications or relevant work/publication history as an author, noting any publications, writing awards and achievements, i.e., residencies or grants won, retreats undertaken, and engagement with the writing sector.

Professional Publication

A work is considered professionally published if it meets any of the following:

- Published by a professional publisher with national distribution
- Published online through a website that uses a formal editorial review process
- Produced or performed by a professional theatre company or radio station.

Online Publications

To qualify, online works must:

- Undergo a formal editorial review by a named editor or editorial committee
- Be published on a professional or recognised platform (website link required)
- Include the platform's submission guidelines and editor contact details.

Self-Published Works

May be eligible if:

- Distributed nationally (across all Australian states and territories), or
- Available online under the criteria listed above, or
- Reviewed in an established literary journal, major newspaper, or national magazine.

Co-Authored Works

You may list co-authored publications if:

- You are the sole author of at least 50% of the work
- If two co-authors, at least 30% of the work must be solely yours.

Significant Publication (Full-Length Work)

- **Children's or Young Adult Literature:**
 - At least 6 works under 20,000 words; or
 - At least 3 works over 20,000 words; or
 - At least 6 published picture books
- **Fiction and non-fiction works:** 50,000 words minimum
- **Poetry collections:** 50 pages minimum
- **Scripts:** 50 minutes minimum.

Substantial Publication (Body of Minor Work)

- **Short stories (fiction):** Minimum 5 stories totalling 15,000 words
- **Short Stories (non-fiction):** Minimum 3 stories totalling 15,000 words
- **Poems:** Minimum 10 poems totalling 100 lines
- **Scripts:** Minimum 5 works totalling 20,000 words.

Residency Categories

- Pioneer (Upcoming Writer)
- Black Opal (Emerging Writer)
- Golden Mile (Established Writer).

Salaried

KSP's residencies are **salaried**. Successful applicants receive a stipend, with a partial payment made at the commencement of the residency and the balance paid upon submission of reports. Stipend amounts are listed on the individual residency category pages in this document.

Note: A pending grant application may allow us to increase the number of residency placements and stipend amounts per category. Successful applicants will be advised of the final details once the outcome is known.

Non-Salaried

Applicants shortlisted in the Black Opal (Emerging) category may be offered a non-salaried residency position, known as an Invited Writer Scholarship. Refer to the Black Opal section in this document for more information.

2027

KSP WRITING RESIDENCIES

PIONEER - UPCOMING -

OPENING: 1 JUNE 2026

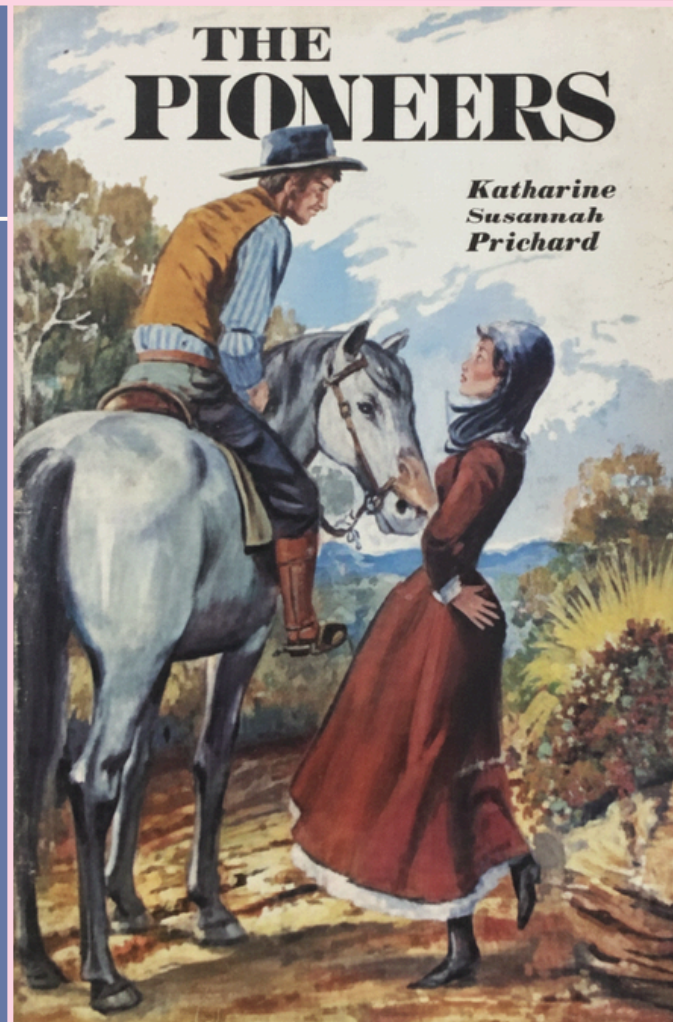
CLOSING: 30 JUNE 2026

FOR AUTHORS 30 YEARS OR
UNDER YET TO PUBLISH A FULL-
LENGTH MANUSCRIPT OR
COLLECTION

POSITIONS: TWO (MINIMUM)

STIPEND: \$500

DURATION: TWO WEEKS



KSP's annual literary, residency and fellowship programs are proudly sponsored by the KSP Foundation with generous support from the Shire of Mundaring, members, and partners.



Guidelines

Pioneer - Upcoming

This category is named after Katharine Susannah Prichard's debut novel, *The Pioneers* (1915), which drew on her experiences as a governess in Gippsland, Victoria, and won a major Empire-wide literary prize. This residency honours the fresh energy and courageous first steps of upcoming writers – those at the beginning of their journey, full of dreams, determination, and untamed possibility. Like the early settlers who carved new lives from the land in her story, this category celebrates bold beginnings, the laying of creative foundations, and the vibrant promise of voices ready to explore and shape their own literary paths.

Eligibility

Applicants must:

- Be a current resident of Australia
- Be a current member of the KSP Writers' Centre
- Be aged between 18 and 30
- Have had some minor work published in print, visual, or broadcast media
- Be actively working towards the completion of their first **full-length literary work**, or building a portfolio towards a substantial body of **minor published work**
- Have some experience or involvement in the writing or publishing sector (e.g. study, publication, volunteering, or employment).

Requirements

During a Pioneer Residency, the writer is expected to:

- Focus entirely on progressing their manuscript (no other service delivery expectations)
- Submit two reports at the conclusion of the residency:
 - Artistic report
 - Publication report
- Optional:
 - Host a 1- or 2-hour workshop
 - Present at a KSP writing group or event including a short talk, a reading,
 - or a writing activity or exercise.

ENCOURAGEMENT FOR YOUNG
WRITERS TO FIND THEIR VOICE

2027

KSP WRITING RESIDENCIES

BLACK OPAL - EMERGING -

OPENING: 1 JUNE 2026
CLOSING: 30 JUNE 2026

FOR AUTHORS WITH ONE
OR TWO FULL-LENGTH
PUBLICATIONS OR
COLLECTIONS

POSITIONS: TWO (MINIMUM)

STIPEND: \$1,000

DURATION: TWO WEEKS



Guidelines

Black Opal - Emerging

This category is inspired by Katharine Susannah Prichard's second novel, *The Black Opal* (1921), which is a vivid tale set in the opal-mining community of Fallen Star Ridge, where hidden depths and fiery beauty lie beneath rough exteriors. This early-career category reflects the stage where writers have begun to reveal their true brilliance – polishing raw talent into something luminous and enduring. Just as the black opal conceals its iridescent fire until skilfully brought to light, this residency supports emerging writers who are building depth, gaining recognition, and transforming potential into powerful, resonant work.

Eligibility

Applicants must:

- Be a current resident of Australia
- Be a current member of the KSP Writers' Centre
- Be aged 18 or over
- Have published at least one, but no more than two **full-length works**, or have a substantial body of **minor published work** and be actively working on their first major publication
- Demonstrate a clear commitment to advancing the literary arts within both the writing community and the broader public (e.g. study, publication, volunteering, or employment).

Requirements

During a Black Opal residency, the writer is expected to:

- Progress a current writing project
- Present at least once at a KSP writing group session, including delivery of a short talk, book reading, and/or a writing activity or exercise
- Host a 2- or 3-hour writing workshop based on an area of expertise
- Submit two reports at the conclusion of the residency:
 - Artistic report
 - Publication report
- Optional:
 - Provide a mentoring/manuscript assessing session (one-on-one or small group).



KSP's annual literary, residency and fellowship programs are proudly sponsored by the KSP Foundation with generous support from the Shire of Mundaring, members, and partners.

SUPPORT FOR WRITERS TO GAIN MOMENTUM

Invited Writer Scholarship (Non-Salaried)

The Selection Panel may offer one or more non-salaried Invited Writer positions to shortlisted applicants in the Black Opal (Emerging) category. This placement includes complimentary accommodation and is designed to support writers of exceptional potential who were not selected for a salaried KSP residency. Invited Writers may focus solely on advancing their manuscript and are not required to deliver workshops, presentations, or mentoring sessions unless they wish to.

Eligibility

Applicants must:

- Be a current resident of Australia
- Be a current member of the KSP Writers' Centre
- Be aged 18 or over
- Have published at least one, but no more than two **full-length works**, or have a substantial body of **minor published work** and be actively working on their first major publication
- Demonstrate a clear commitment to advancing the literary arts within both the writing community and the broader public (e.g. study, publication, volunteering, or employment).

Requirements

- Invited Writers may focus entirely on progressing their manuscript
- There are no mandatory service delivery requirements
- Residents are required to submit the following at the end of their residency:
 - Artistic report
 - Publication report.

Important Note: Tick the box on the Black Opal (Emerging) application form if you would like to be considered for this Invited Writer Scholarship.



A GIFT OF TIME TO WRITE AND CONNECT.

2027

KSP WRITING RESIDENCIES

GOLDEN MILE - ESTABLISHED -

OPENING: 1 JUNE 2026

CLOSING: 30 JUNE 2026

FOR AUTHORS WITH MORE
THAN TWO FULL-LENGTH
PUBLICATIONS OR
COLLECTIONS

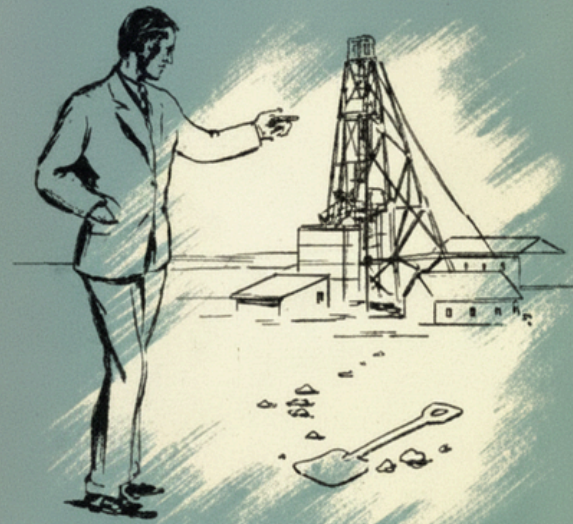
POSITIONS: ONE

STIPEND: \$2,000

DURATION: THREE-FOUR WEEKS



GOLDEN MILES



*Katharine
Susannah Prichard*

KSP's annual literary, residency and fellowship programs are proudly sponsored by the KSP Foundation with generous support from the Shire of Mundaring, members, and partners.



Guidelines

Golden Mile - Established

This category draws from *Golden Miles* (1948), the celebrated second novel in Katharine Susannah Prichard's acclaimed Goldfields Trilogy – written in her later, richly productive years and often regarded as a pinnacle of her career. Evoking the golden wealth and enduring legacy of the Western Australian Kalgoorlie gold rush that Prichard chronicled so masterfully, this residency provides dedicated time and space to refine mastery and contribute to Australia's literary heritage in the spirit of Katharine's own late-life triumphs.

Eligibility

Applicants must:

- Be a current resident of Australia
- Be a current member of the KSP Writers' Centre
- Be aged 18 or over
- Have achieved **significant publication** success, with more than two **full-length works** published
- Demonstrate a clear commitment to advancing the literary arts within both the writing community and the broader public (e.g. study, publication, volunteering, or employment).

Requirements

During a Golden Mile residency, the writer is expected to:

- Progress a current writing project;
- Present at least once at a KSP writing group session, including delivery of a short talk, book reading, and/or a writing activity or exercise
- Host a 3-hour writing workshop based on an area of expertise
- Submit two reports at the conclusion of the residency:
 - Artistic report
 - Publication report.

SPACE FOR WRITERS TO
REFLECT AND LEAVE A LEGACY

FAQs

What should I prepare for the Supporting Residency Document?

The Supporting Residency Document asks applicants to supply the following information (refer to the document on our website for more specific details):

1. **Cover Letter**, max two pages, giving details of suitability and reasons for applying
2. **Literary Resume**, no page limit, including relevant work history, any publications, writing awards and achievements, i.e., residencies or grants won, and community engagement with the writing sector
3. **Project Details**, max one page, focusing on the work you expect to be developing during the residency
4. **Workshop Proposal**, max one page, outlining your workshop idea [where applicable - check specific residency guidelines]
5. **Sample of Polished Work**, ten pages of polished work; this sample may be either published or unpublished material, which best reflects and showcases your writing style.

*****Please follow all guidelines and limits (if applicable) to ensure your application is valid.**

Is there a cost to apply?

No, but you do need to be a current financial member of the KSP Foundation Inc to be eligible, or your application will be disqualified. Visit our [website](#) to sign up. Note that interstate, regional and overseas applicants qualify for the 'Country' category. Also note that the WA Writers United (WAWU) reciprocal membership does not apply in this instance. You can check your membership status with KSP staff.

I have received a KSP fellowship in the past. Can I apply for a KSP residency position?

If your fellowship reports from the previous stay were submitted, then yes.

I have received a KSP residency position in the past. Can I apply for another?

Not in the same category, no. But you can apply for a different category, if eligible.

Do I need a car for my residency?

If you are travelling interstate and would like the option to drive yourself around, we recommend hiring a car. Otherwise, if you are not planning to explore the area, you can just book a taxi/Uber for your arrival and return trip. Our nearest shopping centres are a short drive away, but there are delivery services available from nearby vendors.

What does the KSP Writers' Centre look like?

You can find photos of the grounds, heritage-listed house, and cabins in this document, on our website and on our social media pages. If you'd like to see a specific area, please email the KSP Office with your request.

Will I be staying alone at KSP if I receive a residency placement?

We have three cabins available, so Writers-in-Residence will usually have the company of at least one other writer while at KSP. We also have regular writing groups at the Centre so there are plenty of opportunities to meet people.

How do I apply?

1. Check Your Eligibility

- Read the [Residency Guidelines & Definitions] to determine the right category for you.

2. Prepare Your Materials

- Download and complete the Supporting Residency Document (template available on our website).

3. Gather Additional Materials

- Your author headshot, letters of recommendation or statements of support.

4. Become a KSP Member

- You must be a current member to apply.
- Unsure of your status? Email our staff and we'll check for you.

5. Create a Submittable Account

- Sign up (or log in) at [Submittable.com] – it's free.

6. Complete Your Application

- Click the Submittable link on our website and choose the correct residency category.
- Fill out all required fields, upload your documents, and sign the Terms of Use.

7. Final Review & Submit

- Proofread your application carefully before submitting.
- You can save and return to your application anytime before the deadline.

OTHER ENQUIRIES

Contact the KSP Writers' Centre office on 08 9294 1872 or office@kspwriterscentre.com

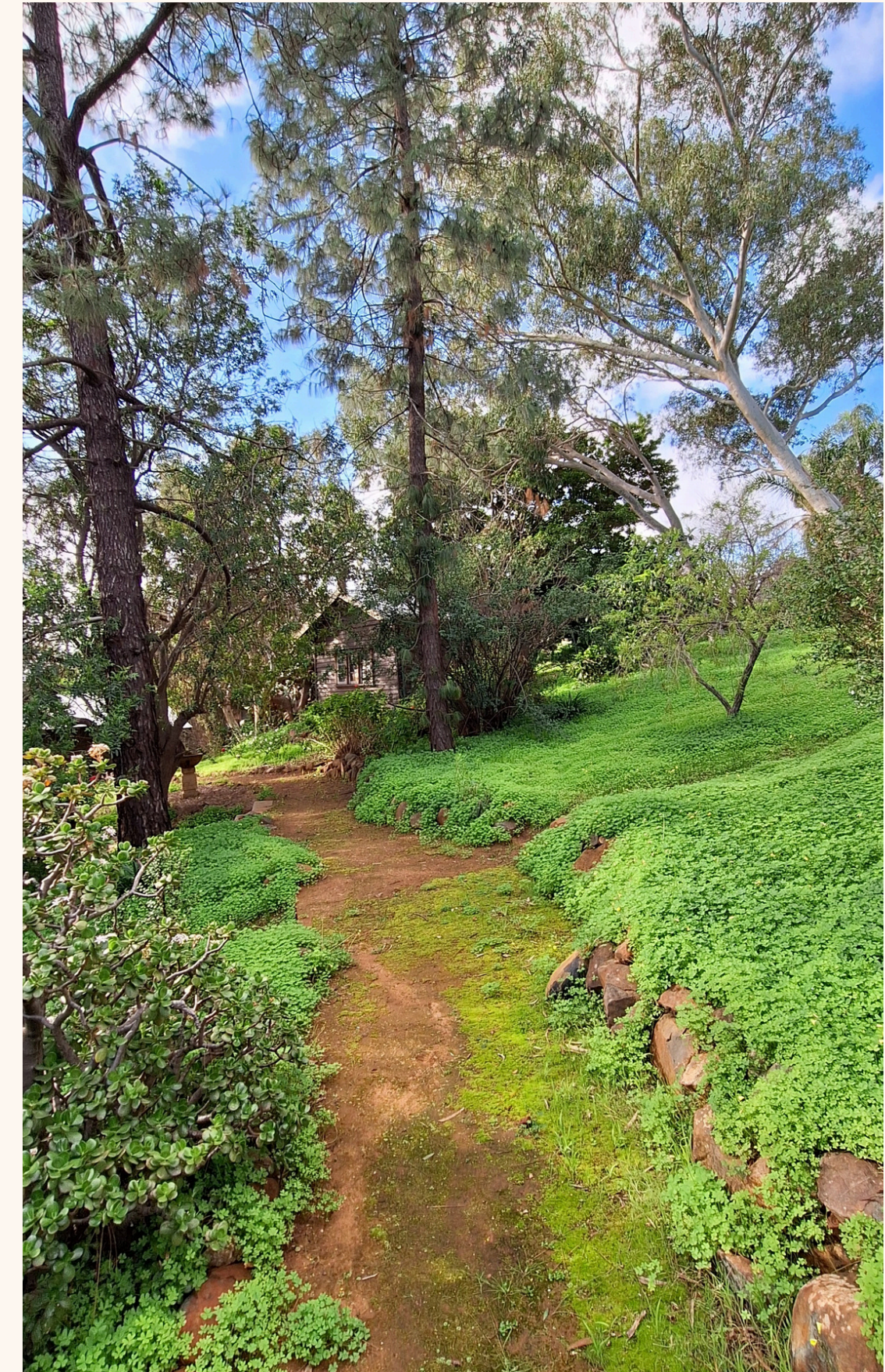
GROUNDS



Front of the house



Top of the garden



Bottom of the garden

HERITAGE-LISTED HOUSE



Library



Function Room



Living Area

CABINS



Bed & Kitchenette



Desk



Bathroom



We look forward to seeing you at KSP!

FINDS US ON:



www.kspwriterscentre.com



[@ksp_writers_centre](https://www.instagram.com/ksp_writers_centre)



[KSP Writers' Centre](https://www.facebook.com/KSPWritersCentre)



office@kspwriterscentre.com



(08) 9294 1872

